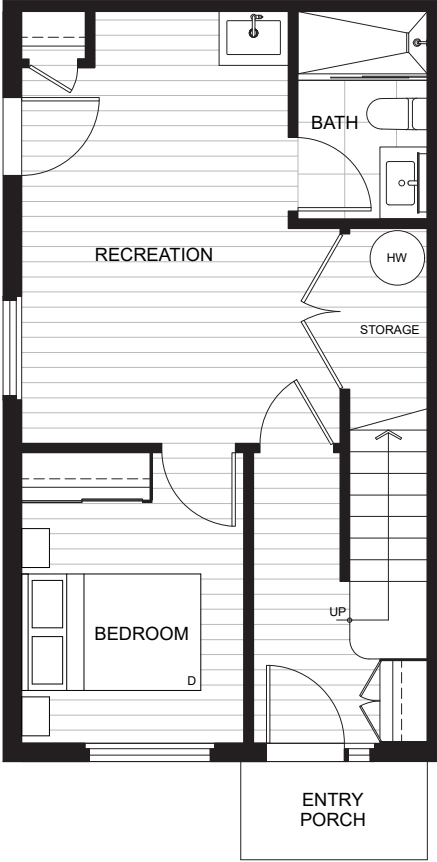
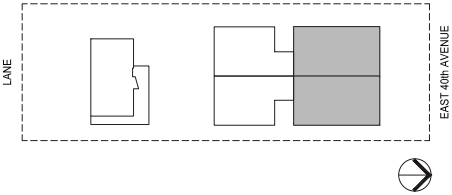


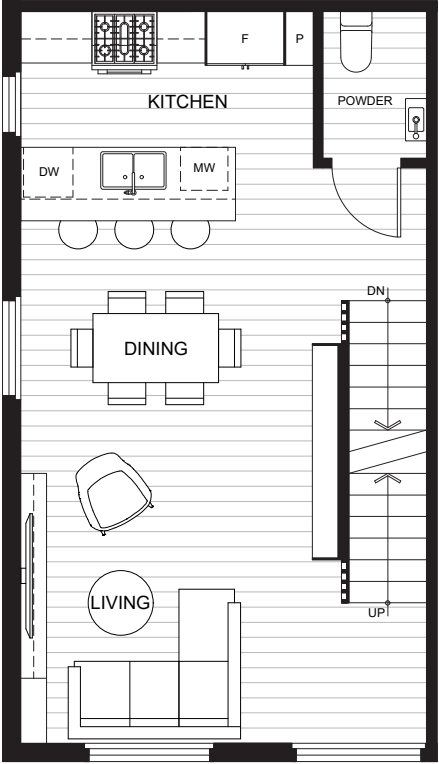
UNIT 1 - *Armstrong*

(Unit 2 - Ellington - Reversed)

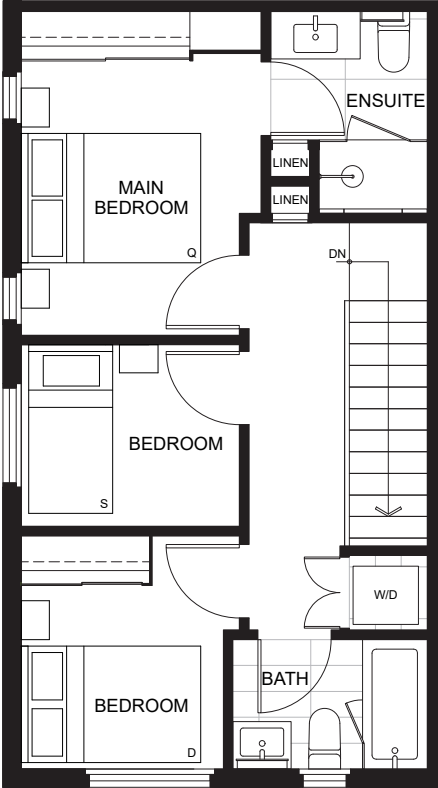
FOUR BEDROOM + REC, 3.5 BATHROOM
1,518 sq ft



LOWER
503 sq ft



MAIN
499 sq ft

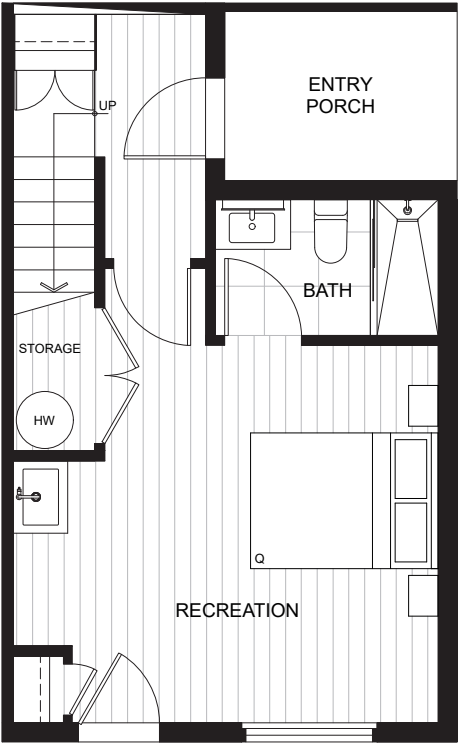
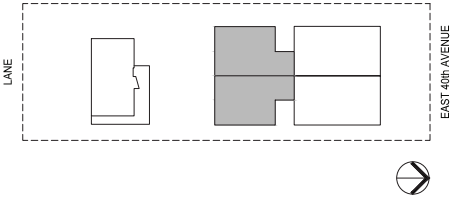


UPPER
516 sq ft

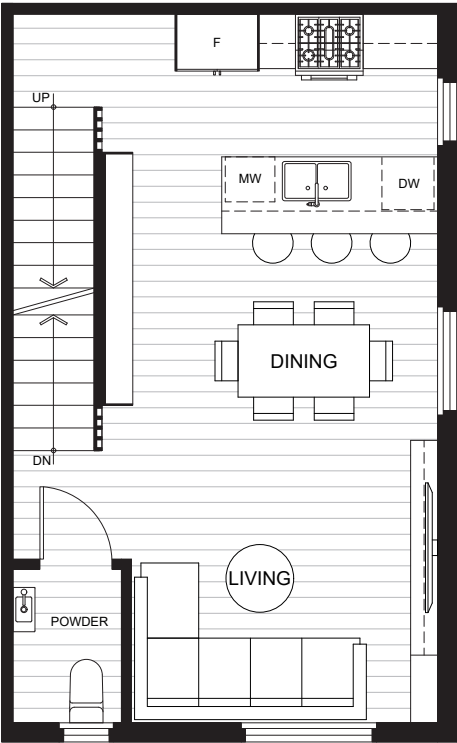
UNIT 3 - Davis

(Unit 4 - Coltrane - Reversed)

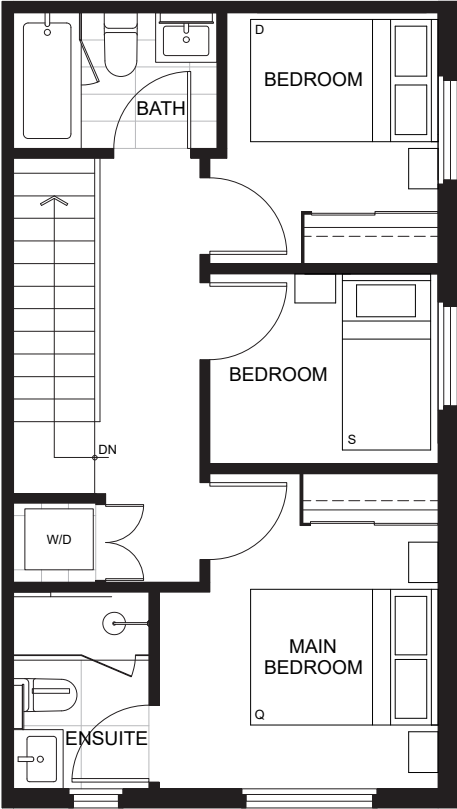
THREE BEDROOM + REC, 3.5 BATHROOM
1,376 sq ft



LOWER
408 sq ft



MAIN
463 sq ft



UPPER
505 sq ft

UNIT 5- *Fitzgerald*

THREE BEDROOM, 2.5 BATHROOM
1,127 sq ft



QUINTET

